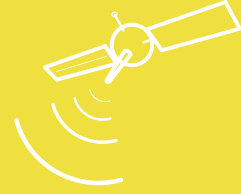




Wellshow
Always Innovation



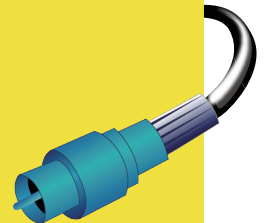
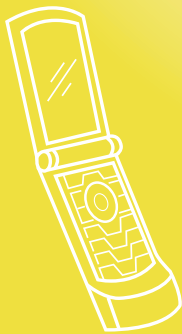
047



PRODUCT SPECIFICATION

GSM 800/900/1800/1900MHz Glass Mount type

Product No. AG002WSG08XXX



RF Connector, RF Cable & Antenna Manufacturer

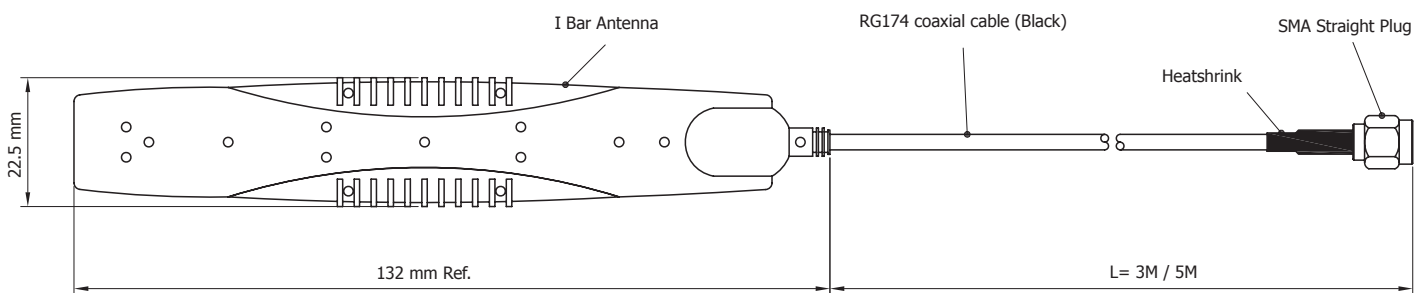
E-mail: sales@wellshow.com.tw
Tel: +886-2-24239376 Fax: +886-2-24260387
9F., No.181, Nanrong Rd., Ren-ai Dist., Keelung City 200, Taiwan (R.O.C.)

GSM 800/900/1800/1900MHz Glass Mount type

Product No. AG002WSG08XXX



Structure Figure



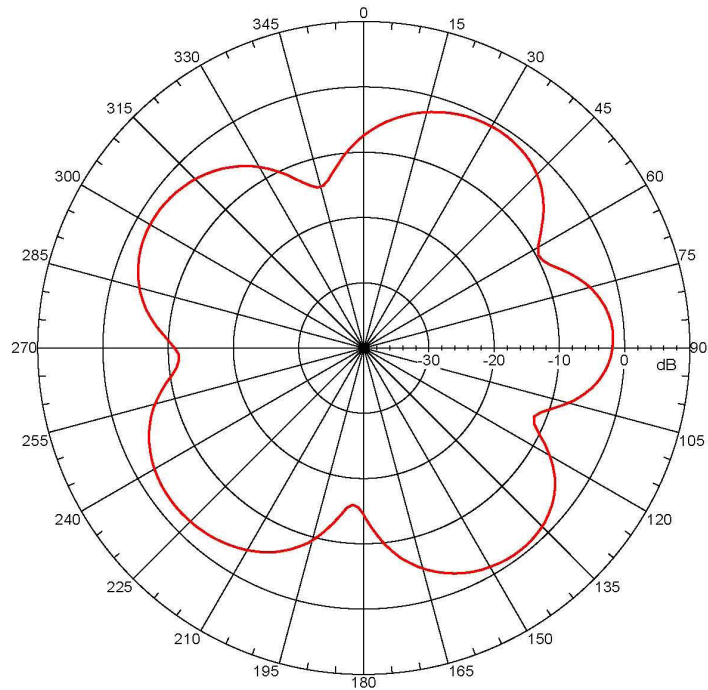
Mechanical

Antenna Type	INSIDE-ON-GLASS (PATCH Antenna)
Antenna Color	Black
Dimensions	132 x 22 x 7 Ref.
Operating Temperature	-20°C~+80°C
Cable Type	RG174 L=3M / 5M
Connector Type	SMA Straight Plug
Connector Plating	Gold / Nickel

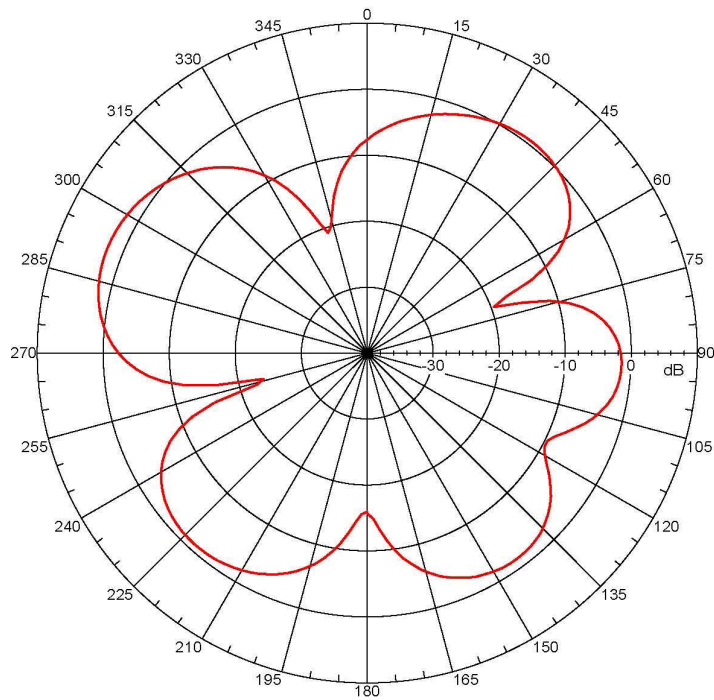
Electrical

Frequency Range	800/900/1800/1900 MHz
Impedance	50 Ω
VSWR	2.0:1
Gain	2.5 dBi (Gain includes the cable loss)
Polarization	Vertical

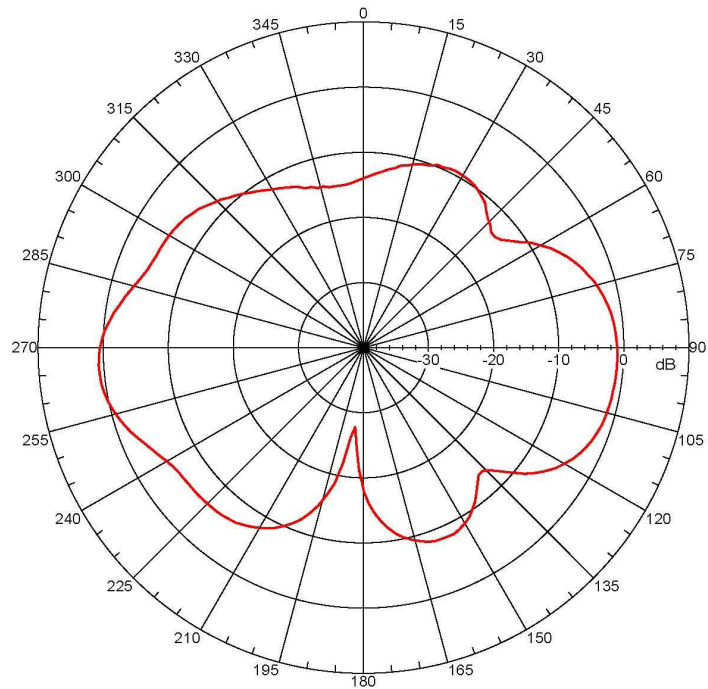
Far-field amplitude at 880 MHz



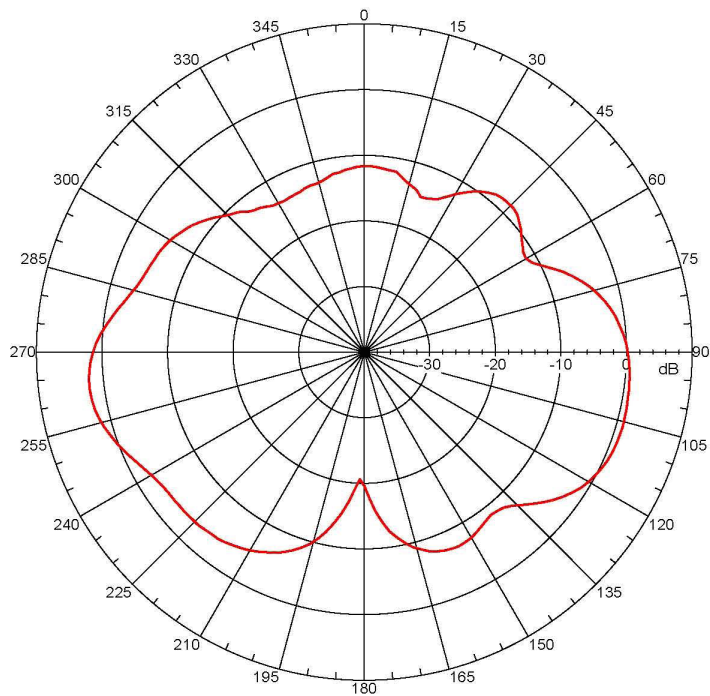
Far-field amplitude at 960 MHz



Far-field amplitude at 1710 MHz



Far-field amplitude at 1800 MHz



Far-field amplitude at 1880 MHz

