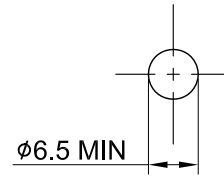
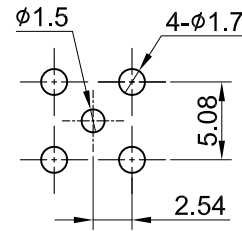


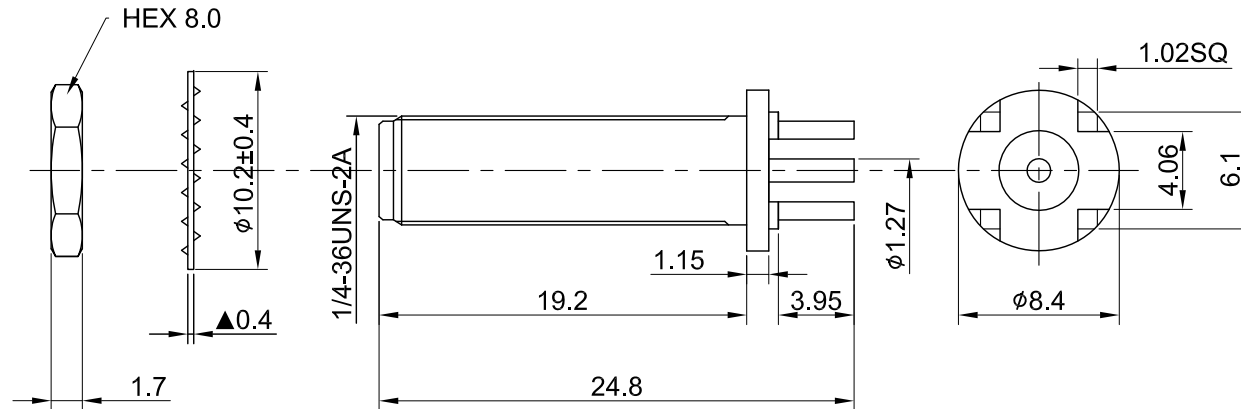
REV	DESCRIPTION	DATE
1.00	INITIAL DESIGN	2013/04/08
1.10	ADD RECOMMENDED PCB HOLE	2024/01/15
1.20	ADD RECOMMENDED MOUNTING HOLE / 0.4	2024/06/12



▲ RECOMMENDED MOUNTING HOLE



RECOMMENDED PCB HOLE




MECHANICAL DATA
DURABILITY : 500 CYCLES
TEMPERATURE RANGE : -65°C ~ + 165°C

ELECTRICAL DATA
FREQUENCY RANGE: DC~6GHz
IMPEDANCE : 50Ω
VSWR : 1.3 MAX.
WORKING VOLTAGE : AC 500V
WITHSTANDING VOLTAGE : AC 1000V
INSULATION RESISTANCE : 5000 MΩ MIN

TITLE
SMA(F) B/H st. PCB type L=24.8mm

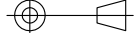
05	NUT	BRASS	GOLD	1
04	WASHER	BRASS	GOLD	1
03	CENTER PIN	Be.Cu	GOLD	1
02	INSULATOR	TEFLON	NONE	1
01	BODY	BRASS	GOLD	1
NO	DESCRIPTION	MATERIAL	FINISH	Q'TY

DWG NO.
C02AO3101A
CUST.
P/N: N/A
DWG NO: N/A
SHEET 1 of 1 Unit: mm



GENERAL TOLERANCES
.X ±0.2
.XX ±0.2
.XXX ±0.2
ANGLES N/A

DRAWN BY: Kelly 2024/06/12
CHK'D BY: Chili 2024/06/12

 REV. 1.20
DA2406120037