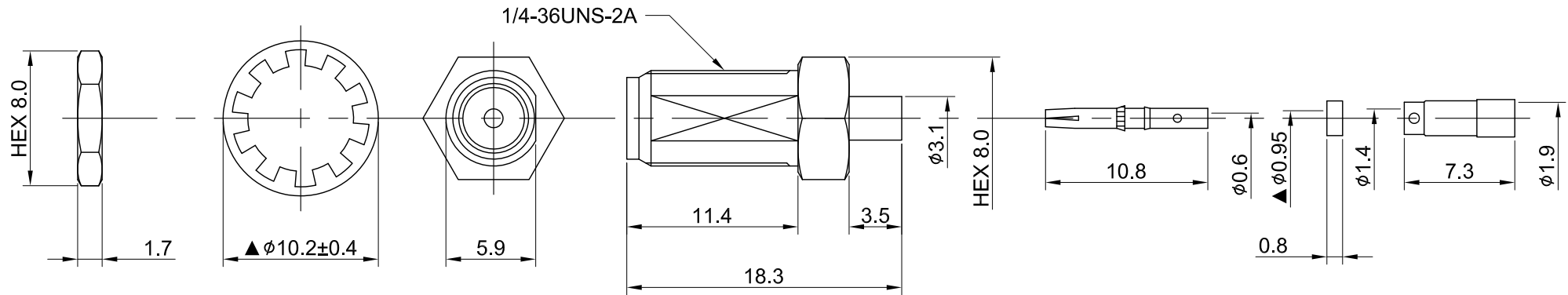
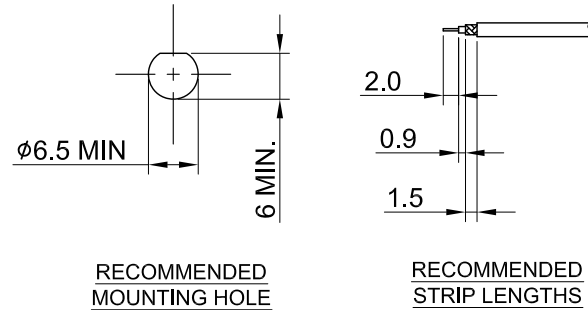


REV	DESCRIPTION	DATE
2.10	NEW DRAWING FRAME	2023/09/11
2.20	CORRECT INSULATION RESISTANCE, CORRECT DIM $\phi 0.95$ W. $\phi 0.9$ , ADD WASHER TOLERANCE	2024/01/12



MECHANICAL DATA  
 DURABILITY : 500 CYCLES  
 TEMPERATURE RANGE : -65°C ~ + 165°C

ELECTRICAL DATA  
 FREQUENCY RANGE: DC~6GHz  
 IMPEDANCE : 50Ω  
 VSWR : 1.3 MAX.  
 WORKING VOLTAGE : AC 170V  
 WITHSTANDING VOLTAGE : AC 500V  
 INSULATION RESISTANCE : 5000 MΩ MIN

07	NUT	BRASS	GOLD	1
06	WASHER	BRASS	GOLD	1
05	SLEEVE	BRASS	NICKEL	1
04	INSULATOR B	TEFLON	NONE	1
03	PIN	Be.Cu	GOLD	1
02	INSULATOR A	TEFLON	NONE	1
01	BODY	BRASS	GOLD	1
NO	DESCRIPTION	MATERIAL	FINISH	Q'TY

TITLE		DRAWN BY:											
SMA st. bh . jack crimp type for RG178		Lottie	2024/01/12										
DWG NO. C02AB31178003		CHK'D BY:	Una 2024/01/12										
CUST. P/N: N/A DWG NO: N/A		<table border="1"> <tr> <td>GENERAL TOLERANCES</td> <td>REVISION</td> </tr> <tr> <td>.X ±0.2</td> <td>REV.</td> </tr> <tr> <td>.XX ±0.2</td> <td>2.20</td> </tr> <tr> <td>.XXX ±0.2</td> <td></td> </tr> <tr> <td>ANGLES N/A</td> <td></td> </tr> </table>		GENERAL TOLERANCES	REVISION	.X ±0.2	REV.	.XX ±0.2	2.20	.XXX ±0.2		ANGLES N/A	
GENERAL TOLERANCES	REVISION												
.X ±0.2	REV.												
.XX ±0.2	2.20												
.XXX ±0.2													
ANGLES N/A													
SHEET 1 of 1	Unit: mm	DA2401020005											

