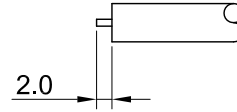
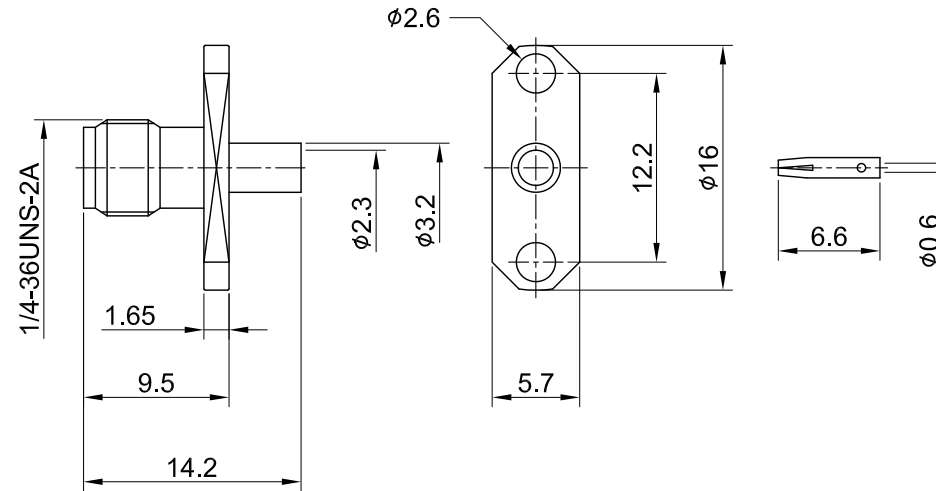


REV	DESCRIPTION	DATE
A	INITIAL DESIGN	2010/01/05
1.10	NEW DRAWING FRAME	2023/12/26



RECOMMENDED STRIP LENGTHS



MECHANICAL DATA  
 DURABILITY : 500 CYCLES  
 TEMPERATURE RANGE : -65°C ~ + 165°C

ELECTRICAL DATA  
 FREQUENCY RANGE: DC~6GHz  
 IMPEDANCE : 50Ω  
 VSWR : 1.3 MAX.  
 WORKING VOLTAGE : AC 375V  
 WITHSTANDING VOLTAGE : AC 750V  
 INSULATION RESISTANCE : 5000 MΩ MIN

TITLE  
 SMA(F)st.2H for .085 cable

DWG NO.  
 C02AF31085007C



NO	DESCRIPTION	MATERIAL	FINISH	Q'TY
03	CENTER PIN	Be.Cu	GOLD	1
02	INSULATOR	TEFLON	NONE	1
01	BODY	BRASS	GOLD	1

CUST.  
 P/N: N/A  
 DWG NO: N/A

SHEET 1 of 1 Unit: mm

GENERAL TOLERANCES	DRAWN BY:	DATE
.X ±0.2	Kelly	2023/12/26
.XX ±0.2	CHK'D BY: Eileen	2023/12/26
.XXX ±0.2		
ANGLES N/A		

REV. 1.10  
 DA2312250008