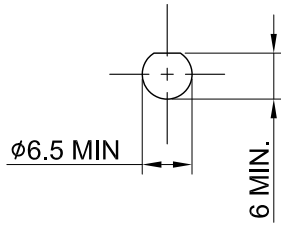
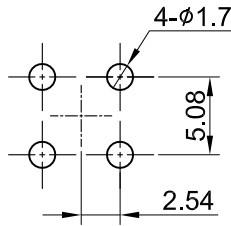


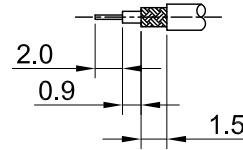
REV	DESCRIPTION	DATE
1.01	CORRECT DWG NO.	2021/09/23
1.10	NEW DRAWING FRAME	2024/01/22



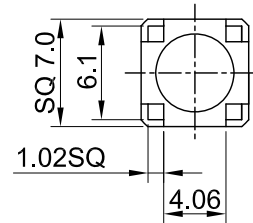
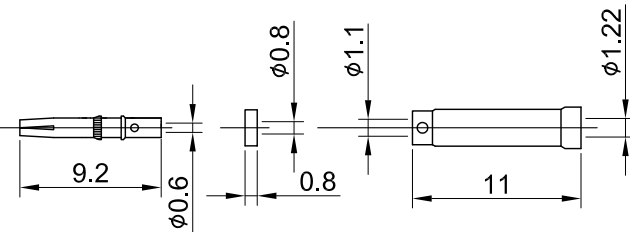
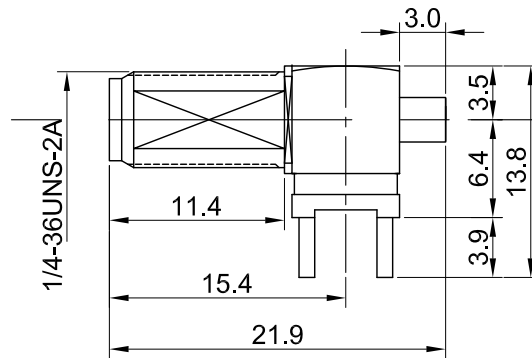
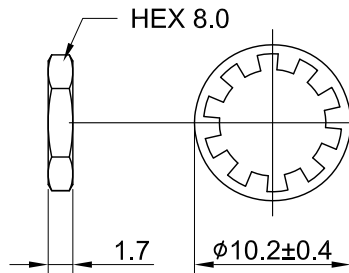
RECOMMENDED MOUNTING HOLE



RECOMMENDED PCB HOLE



RECOMMENDED STRIP LENGTHS



MECHANICAL DATA
 DURABILITY : 500 CYCLES
 TEMPERATURE RANGE : -65°C ~ + 165°C

ELECTRICAL DATA
 FREQUENCY RANGE: DC~6GHz
 IMPEDANCE : 50Ω
 VSWR : 1.5 MAX.
 WORKING VOLTAGE : AC 170V
 WITHSTANDING VOLTAGE : AC 500V
 INSULATION RESISTANCE : 5000 MΩ MIN

07	INSULATOR B	TEFLON	NONE	1
06	NUT	BRASS	GOLD	1
05	WASHER	BRASS	GOLD	1
04	SLEEVE	BRASS	NICKEL	1
03	CENTER PIN	Be.Cu	GOLD	1
02	INSULATOR A	TEFLON	NONE	1
01	BODY	BRASS	GOLD	1
NO	DESCRIPTION	MATERIAL	FINISH	Q'TY

TITLE		DRAWN BY: Kelly		2024/01/22
SMA(F)st.bh. PCB crimp for 1.13, thread 11.4, total L:21.9		CHK'D BY: Chili		2024/01/22
DWG NO. C02BI31113015L-1		REV.		1.10
CUST. P/N: N/A DWG NO: N/A		DA2312260053		
SHEET 1 of 1		Unit: mm		



GENERAL TOLERANCES	
.X	±0.2
.XX	±0.2
.XXX	±0.2
ANGLES	N/A