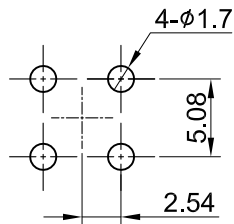
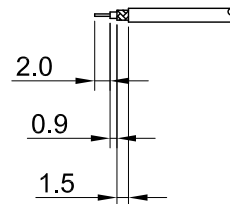


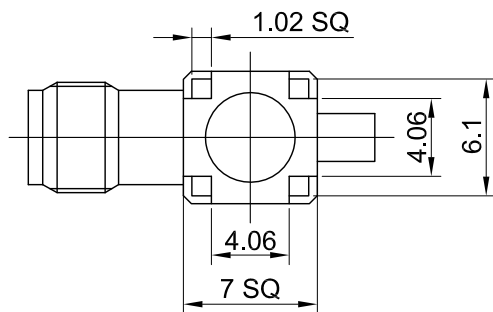
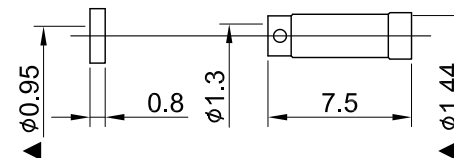
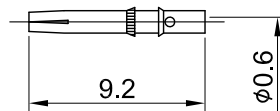
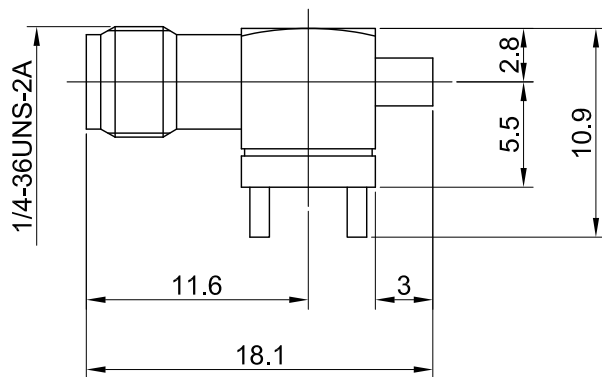
REV	DESCRIPTION	DATE
2.00	CHG SLEEVE FINISH NICKEL W. ALBALOY	2012/05/29
2.10	CORRECT $\phi 0.95/ \phi 1.44$ W. $\phi 0.9/ \phi 1.4$	2024/01/16



RECOMMENDED  
PCB HOLE



RECOMMENDED  
STRIP LENGTHS



MECHANICAL DATA  
DURABILITY : 500 CYCLES  
TEMPERATURE RANGE : -65°C ~ + 165°C

ELECTRICAL DATA  
FREQUENCY RANGE: DC~6GHz  
IMPEDANCE : 50Ω  
VSWR : 1.5 MAX.  
WORKING VOLTAGE : AC 170V  
WITHSTANDING VOLTAGE : AC 500V  
INSULATION RESISTANCE : 5000 MΩ MIN

TITLE	
SMA(F) st PCB crimp for 1.37	

05	SLEEVE	BRASS	NICKEL	1
04	INSULATOR B	TEFLON	NONE	1
03	CENTER PIN	Be.Cu	GOLD	1
02	INSULATOR A	TEFLON	NONE	1
01	BODY	BRASS	GOLD	1
NO	DESCRIPTION	MATERIAL	FINISH	Q'TY

DWG NO. C02BI31137015B	
CUST. P/N: N/A DWG NO: N/A	
SHEET 1 of 1	Unit: mm

		DRAWN BY: Kelly 2024/01/16	
GENERAL TOLERANCES .X ±0.2 .XX ±0.2 .XXX ±0.2 ANGLES N/A		CHK'D BY: Chili 2024/01/16	
		REV. 2.10	
DA2312270025			