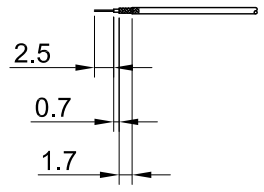
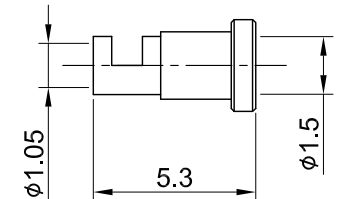
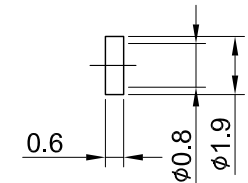
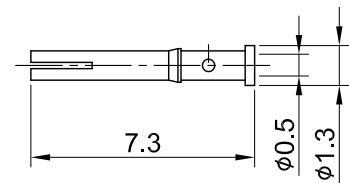
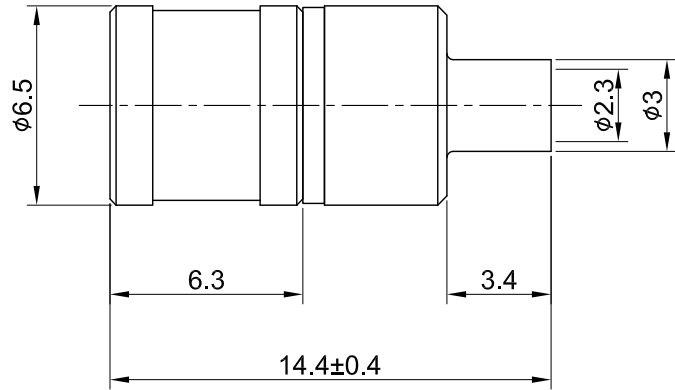


REV	DESCRIPTION	DATE
1.20	NEW DRAWING FRAME	2023/08/21
1.30	CORRECT INSULATION RESISTANCE	2023/11/06



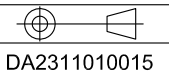
RECOMMENDED STRIP LENGTHS



MECHANICAL DATA
 DURABILITY : 500 CYCLES
 TEMPERATURE RANGE : -65°C ~ + 165°C

ELECTRICAL DATA
 FREQUENCY RANGE: DC~4GHz
 IMPEDANCE : 50Ω
 VSWR : 1.5 MAX.
 WORKING VOLTAGE : AC 335V
 WITHSTANDING VOLTAGE : AC 750V
 INSULATION RESISTANCE : 1000 MΩ MIN

08	FERRULE	BRASS	GOLD	1	TITLE SMB(M)st crimp for 1.32/1.32DS				
07	INSULATOR B	TEFLON	NONE	1					
06	CENTER PIN	Be. Cu	GOLD	1	DWG NO. C03AA3F132003D				
05	BODY B	BRASS	GOLD	1					
04	INSULATOR A	TEFLON	NONE	1	CUST. P/N: N/A DWG NO: N/A				
03	BODY A	BRASS	GOLD	1					
02	SHELL	BRASS	GOLD	1	GENERAL TOLERANCES .X ±0.2 .XX ±0.2 .XXX ±0.2 ANGLES N/A				
01	INNER RETAINING RING	Be.Cu	GOLD	1					
NO	DESCRIPTION	MATERIAL	FINISH	Q'TY	SHEET 1 of 1	Unit: mm	DRAWN BY: Lottie 2023/11/06	CHK'D BY: Kana 2023/11/06	REV. 1.30



DA2311010015