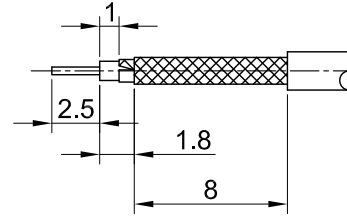
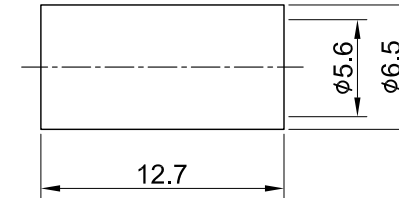
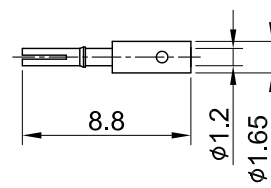
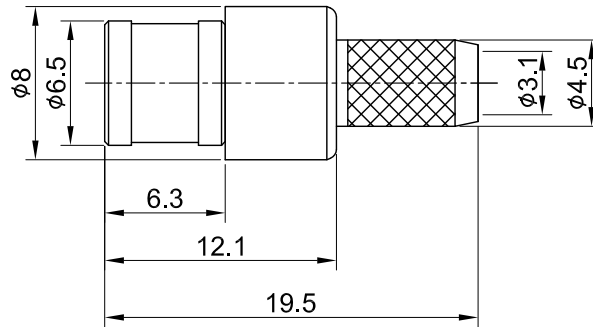


REV	DESCRIPTION	DATE
1.20	ADD DIMENSION	2023/08/03
1.30	CORRECT INSULATION RESISTANCE	2023/11/06



RECOMMENDED STRIP LENGTHS



MECHANICAL DATA
 DURABILITY : 500 CYCLES
 TEMPERATURE RANGE : -65°C ~ + 165°C

DIELECTRICAL DATA
 FREQUENCY RANGE: DC~4GHz
 IMPEDANCE : 50Ω
 VSWR : 1.5 MAX.
 WORKING VOLTAGE : AC 335V
 WITHSTANDING VOLTAGE : AC 750V
 INSULATION RESISTANCE : 1000 MΩ MIN

07	FERRULE	BRASS	GOLD	1
06	BODY B	BRASS	GOLD	1
05	CENTER PIN	Be.Cu	GOLD	1
04	INSULATOR	TEFLON	NONE	1
03	BODY A	BRASS	GOLD	1
02	SHELL	BRASS	GOLD	1
01	INNER RETAINING RING	Be.Cu	GOLD	1
NO	DESCRIPTION	MATERIAL	FINISH	Q'TY

TITLE				
SMB(M)st crimp for LMR200				
DWG NO.		C03AA3FL20003		
CUST. P/N:		N/A		
DWG NO:		N/A		
SHEET 1 of 1		Unit: mm		
GENERAL TOLERANCES		DRAWN BY: Lottie 2023/11/06		
.X ±0.2		CHK'D BY: Kana 2023/11/06		
.XX ±0.2		REV.		
.XXX ±0.2		DA2311010022		
ANGLES N/A		1.30		

