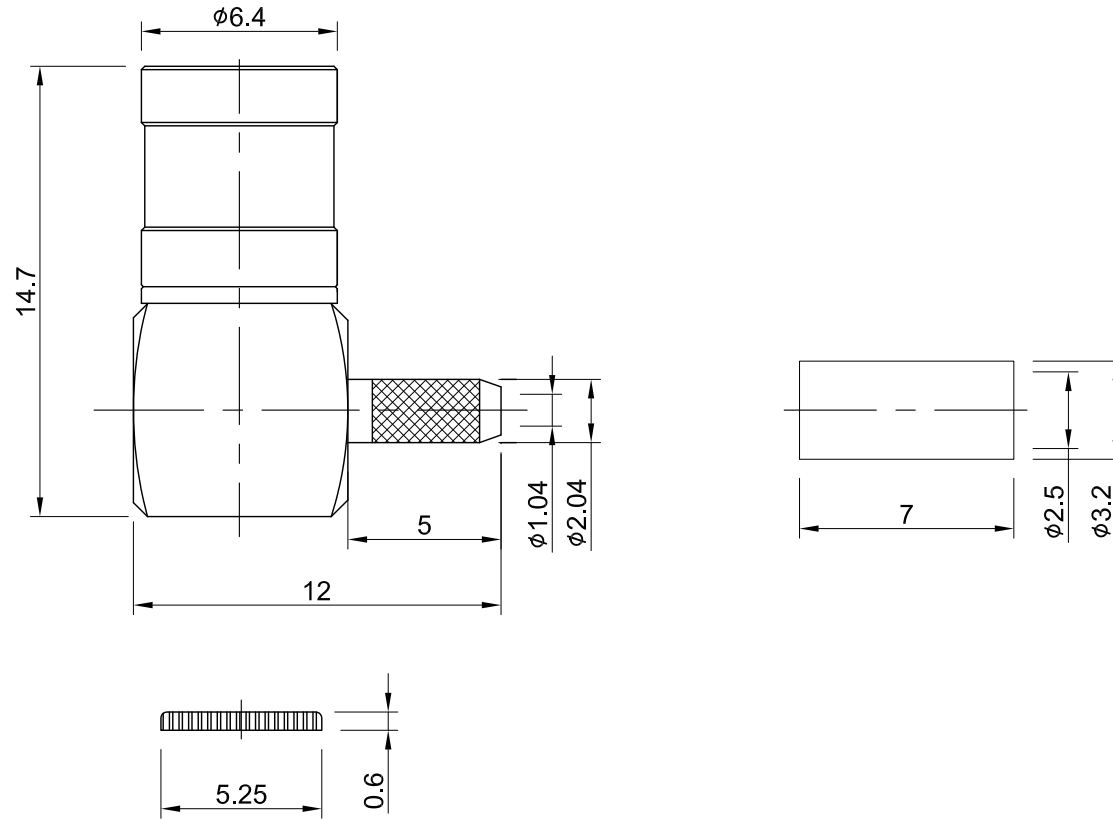


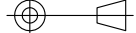
| REV | DESCRIPTION | DATE |
|------|---------------------|------------|
| 1.20 | NEW DRAWING FRAME | 2023/07/28 |
| 1.30 | CHG VSWR 1.5 W. 1.3 | 2024/07/10 |



MECHANICAL DATA
 DURABILITY : 500 CYCLES
 TEMPERATURE RANGE : -65°C ~ + 165°C

ELECTRICAL DATA
 FREQUENCY RANGE: DC~4.0GHz
 IMPEDANCE : 50Ω
 VSWR : 1.5 MAX.

| | | | | | | | | |
|----|-------------|----------|--------|------|----------------------------------|--|--|--|
| 08 | FERRULE | BRASS | GOLD | 1 | TITLE SMB(M) ra. for RG178 | |  | |
| 07 | CAP | BRASS | GOLD | 1 | | | | |
| 06 | C-RING | Be.Cu | GOLD | 1 | | | | |
| 05 | SHELL | BRASS | GOLD | 1 | DWG NO. C03BAWS178001 | | DRAWN BY: Kelly 2024/07/10 | |
| 04 | PIN | Be.Cu | GOLD | 1 | CUST. P/N: N/A DWG NO: N/A | | CHK'D BY: Chili 2024/07/10 | |
| 03 | INSULATOR | TEFLON | NONE | 1 | | | | |
| 02 | BODY B | BRASS | GOLD | 1 | | | | |
| 01 | BODY A | BRASS | GOLD | 1 | SHEET 1 of 1 Unit: mm | |  REV. | |
| NO | DESCRIPTION | MATERIAL | FINISH | Q'TY | | | DA2407100012 | |

| GENERAL TOLERANCES | | DRAWN BY: Kelly 2024/07/10 | |
|--------------------|------|--|--|
| .X | ±0.2 | CHK'D BY: Chili 2024/07/10 | |
| .XX | ±0.2 |  REV. | |
| .XXX | ±0.2 | | |
| ANGLES | N/A | DA2407100012 | |