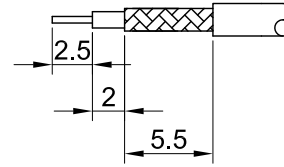
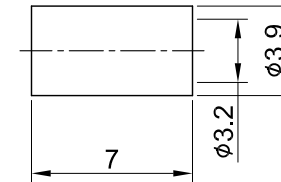
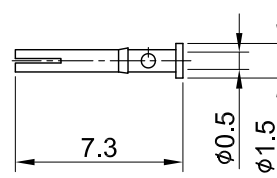
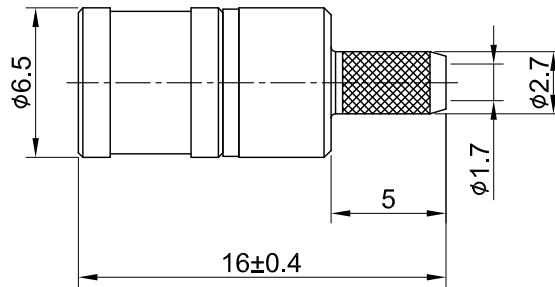


REV	DESCRIPTION	DATE
2.30	NEW DRAWING FRAME	2023/08/03
2.40	CORRECT INSULATION RESISTANCE	2023/11/08



RECOMMENDED STRIP LENGTHS



MECHANICAL DATA  
 DURABILITY : 500 CYCLES  
 TEMPERATURE RANGE : -65°C ~ + 165°C

ELECTRICAL DATA  
 FREQUENCY RANGE: DC~3GHZ  
 IMPEDANCE : 75Ω  
 VSWR : 1.3 MAX.  
 WORKING VOLTAGE : AC 335V  
 WITHSTANDING VOLTAGE : AC 750V  
 INSULATION RESISTANCE : 1000 MΩ MIN

07	FERRULE	BRASS	GOLD	1
06	PIN	Be.Cu	GOLD	1
05	BODY B	BRASS	GOLD	1
04	INSULATOR	TEFLON	NONE	1
03	BODY A	BRASS	GOLD	1
02	SHELL	BRASS	GOLD	1
01	RING	Be.Cu	GOLD	1
NO	DESCRIPTION	MATERIAL	FINISH	Q'TY

TITLE		DRAWN BY:		CHK'D BY:		REVISION	
SMB(M) st. crimp type for RG179 (75ohm)		Lottie	2023/11/08	Dora	2023/11/08	REV. 2.40	
DWG NO. C03OA3F179003		GENERAL TOLERANCES		DA2311060016			
CUST. P/N: N/A DWG NO: N/A		.X ±0.2	.XX ±0.2	ANGLES N/A			
SHEET 1 of 1	Unit: mm						

