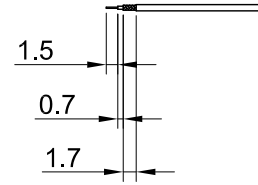
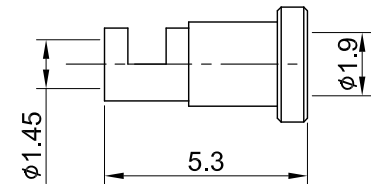
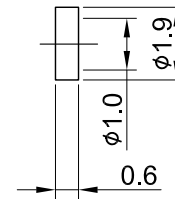
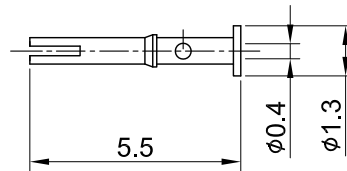
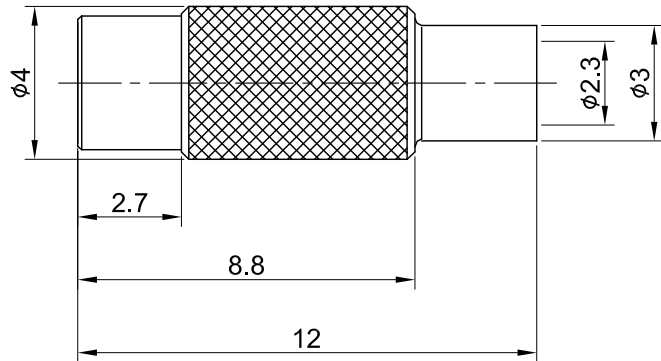


REV	DESCRIPTION	DATE
1.20	NEW DRAWING FRAME	2023/07/31
1.30	CORRECT INSULATION RESISTANCE	2023/11/17



RECOMMENDED STRIP LENGTHS




MECHANICAL DATA  
 DURABILITY : 500 CYCLES  
 TEMPERATURE RANGE : -65°C ~ + 165°C

ELECTRICAL DATA  
 FREQUENCY RANGE: DC~6GHz  
 IMPEDANCE : 50Ω  
 VSWR : 1.3 MAX.  
 WORKING VOLTAGE : AC 170V  
 WITHSTANDING VOLTAGE : AC 500V  
 INSULATION RESISTANCE : 1000 MΩ MIN

05	FERRULE	BRASS	GOLD	1
04	INSULATOR B	TEFLON	NONE	1
03	CENTER PIN	Be.Cu	GOLD	1
02	INSULATOR A	TEFLON	NONE	1
01	BODY	BRASS	GOLD	1
NO	DESCRIPTION	MATERIAL	FINISH	Q'TY

TITLE		DRAWN BY:		CHK'D BY:		REVISION	
MMCX(F) st. crimp type for RG178 cable		Lottie	2023/11/17	Kana	2023/11/17	REV. 1.30	
DWG NO.	C06AA3F178006C	DRAWN BY:		CHK'D BY:		REVISION	
CUST. P/N:	N/A	DRAWN BY:		CHK'D BY:		REVISION	
DWG NO:	N/A	DRAWN BY:		CHK'D BY:		REVISION	
SHEET	1 of 1	DRAWN BY:		CHK'D BY:		REVISION	
Unit:	mm	DRAWN BY:		CHK'D BY:		REVISION	


  
 GENERAL TOLERANCES: .X ±0.2, .XX ±0.2, .XXX ±0.2, ANGLES N/A