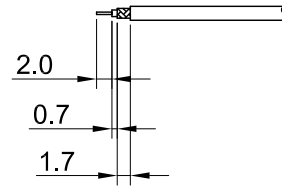
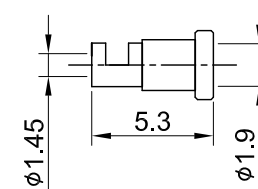
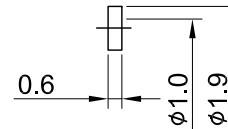
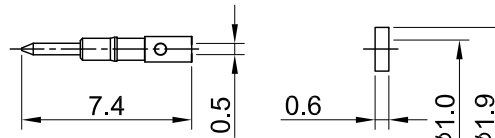
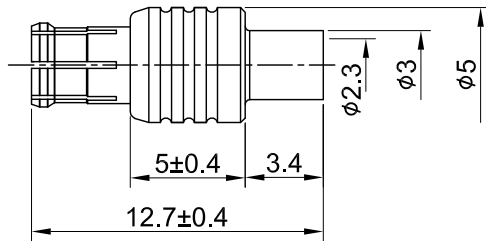


| REV | DESCRIPTION | DATE |
|------|------------------------------------|------------|
| 1.50 | NEW DRAWING FRAME | 2023/08/30 |
| 1.51 | CORRECT INSULATION RESISTANCE UNIT | 2024/01/16 |



RECOMMENDED STRIP LENGTHS



MECHANICAL DATA
TEMPERATURE RANGE : -65°C ~ + 165°C

ELECTRICAL DATA
FREQUENCY RANGE: DC~6GHz
IMPEDANCE : 50Ω
VSWR : 1.3 MAX.
WORKING VOLTAGE : AC 335V
WITHSTANDING VOLTAGE : AC 500V
INSULATION RESISTANCE : 1000 MΩ MIN

| | | | | |
|----|-------------|----------|--------|------|
| 06 | FERRULE | BRASS | GOLD | 1 |
| 05 | GASKET | TEFLON | NONE | 1 |
| 04 | BODY B | BRASS | GOLD | 1 |
| 03 | CENTER PIN | BRASS | GOLD | 1 |
| 02 | INSULATOR | TEFLON | NONE | 1 |
| 01 | BODY A | Be.Cu | GOLD | 1 |
| NO | DESCRIPTION | MATERIAL | FINISH | Q'TY |

| TITLE | | DRAWN BY: | | CHK'D BY: | | REVISION | |
|----------------------------------|--|-----------------|--|------------------|--|----------------|--|
| MCX(M) st. crimp for RG178 | | Kelly | | Eileen | | REV. | |
| DWG NO. C07AA31178004A | | 2024/01/16 | | 2024/01/16 | | 1.51 | |
| CUST. P/N: N/A DWG NO: N/A | | DRAWN BY: Kelly | | CHK'D BY: Eileen | | REVISION: 1.51 | |
| SHEET 1 of 1 Unit: mm | | DA2312270055 | | N/A | | N/A | |



| GENERAL TOLERANCES | | DRAWN BY: | | CHK'D BY: | | REVISION | |
|--------------------|------|------------|--|------------|--|----------|--|
| .X | ±0.2 | Kelly | | Eileen | | REV. | |
| .XX | ±0.2 | 2024/01/16 | | 2024/01/16 | | 1.51 | |
| .XXX | ±0.2 | | | | | | |
| ANGLES | N/A | | | | | | |