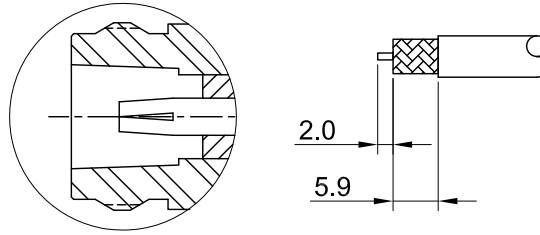
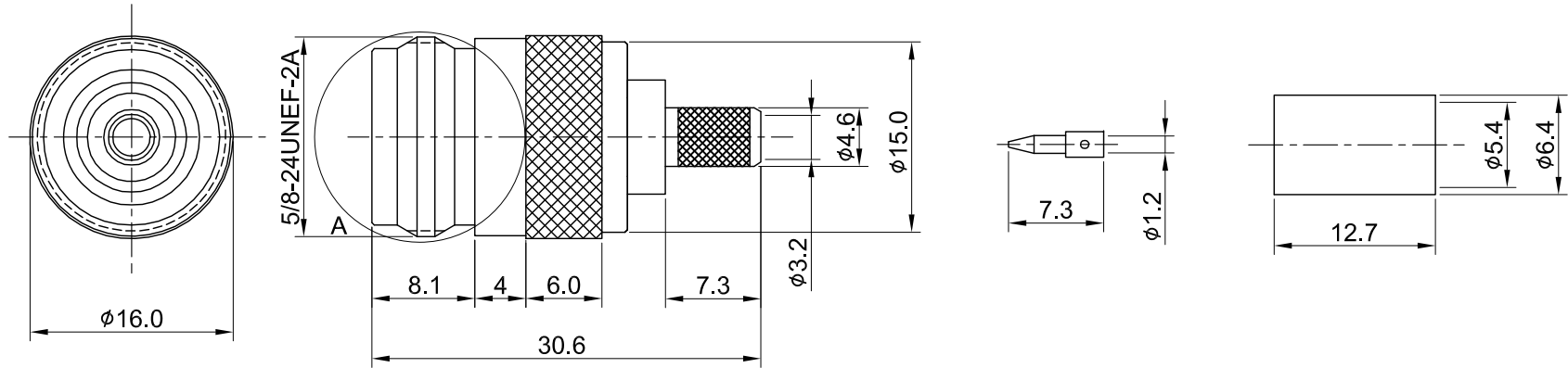


REV	DESCRIPTION	DATE
2.00	CHG BARREL ID ϕ 3.2 W. ϕ 3.0	2018/06/21
2.10	NEW DRAWING FRAME	2024/01/04



DETAIL A

RECOMMENDED STRIP LENGTHS



MECHANICAL DATA
TEMPERATURE RANGE : -65°C ~ + 165°C

ELECTRICAL DATA
FREQUENCY RANGE: DC~6GHz
IMPEDANCE : 50Ω
VSWR : 1.35 MAX.
WORKING VOLTAGE : AC 1000V
WITHSTANDING VOLTAGE : AC 2500V
INSULATION RESISTANCE : 5000 MΩ MIN

TITLE	
N(F)st.crimp for LMR200	

03	FERRULE	BRASS	NICKEL	1
02	PIN	BRASS	GOLD	1
01	CENTER PIN	P.BRONZE	GOLD	1
	INSULATOR	TEFLON	NONE	1
	BODY	BRASS	NICKEL	1
NO	DESCRIPTION	MATERIAL	FINISH	Q'TY

DWG NO. C28CA31L20004A	
CUST. P/N: N/A DWG NO: N/A	
SHEET 1 of 1	Unit: mm

GENERAL TOLERANCES		DRAWN BY: Kelly 2024/01/04	
.X	±0.2	CHK'D BY: Maria 2024/01/04	
.XX	±0.2		
.XXX	±0.2		
ANGLES	N/A	DA2312270083	REV. 2.10