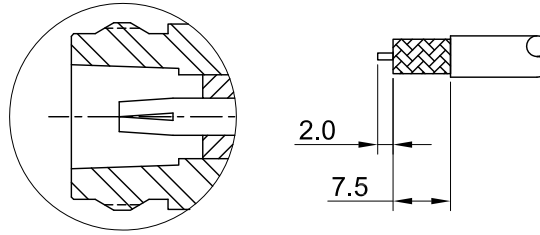
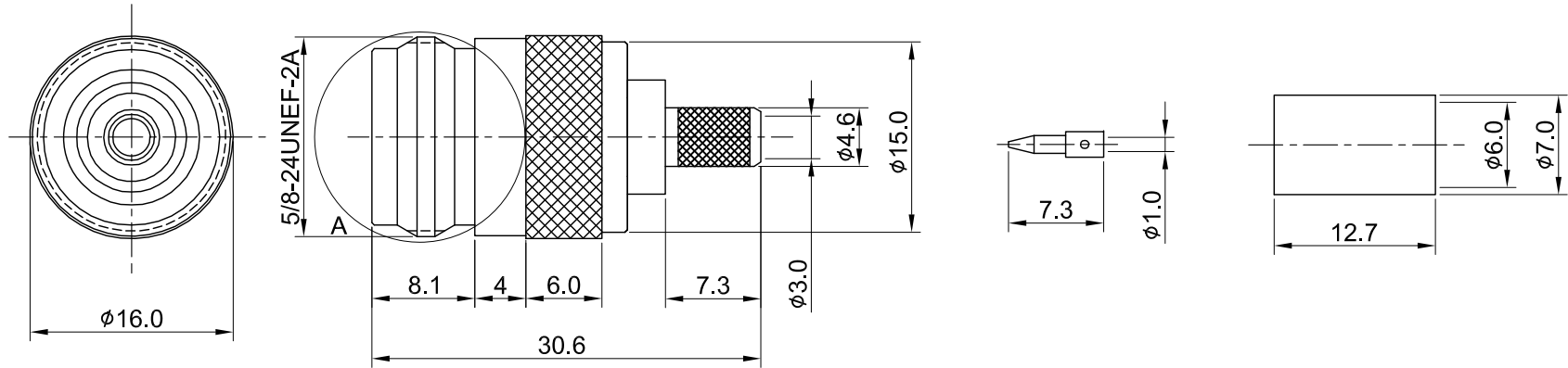


REV	DESCRIPTION	DATE
1.00	INITIAL DESIGN	2019/05/23
1.10	NEW DRAWING FRAME	2024/01/04



DETAIL A

RECOMMENDED STRIP LENGTHS



MECHANICAL DATA
TEMPERATURE RANGE : -65°C ~ + 165°C

ELECTRICAL DATA
FREQUENCY RANGE: DC~6GHz
IMPEDANCE : 50Ω
VSWR : 1.35 MAX.
WORKING VOLTAGE : AC 1000V
WITHSTANDING VOLTAGE : AC 2500V
INSULATION RESISTANCE : 5000 MΩ MIN

TITLE
N(F) st. crimp type for RG223, Pin in Pin

NO	DESCRIPTION	MATERIAL	FINISH	Q'TY
03	FERRULE	BRASS	NICKEL	1
02	PIN	BRASS	GOLD	1
01	CENTER PIN	P.BRONZE	GOLD	1
	INSULATOR	TEFLON	NONE	1
	BODY	BRASS	NICKEL	1

DWG NO. C28CA31223004A
CUST. P/N: N/A DWG NO: N/A
SHEET 1 of 1 Unit: mm

GENERAL TOLERANCES

.X	±0.2
.XX	±0.2
.XXX	±0.2
ANGLES	N/A

DRAWN BY: Kelly 2024/01/04

CHK'D BY: Maria 2024/01/04

REV. 1.10

DA2312270082	1.10
--------------	------