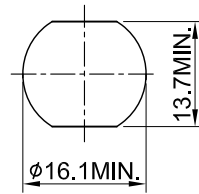
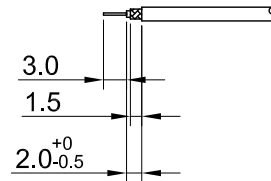


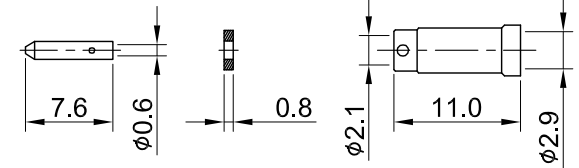
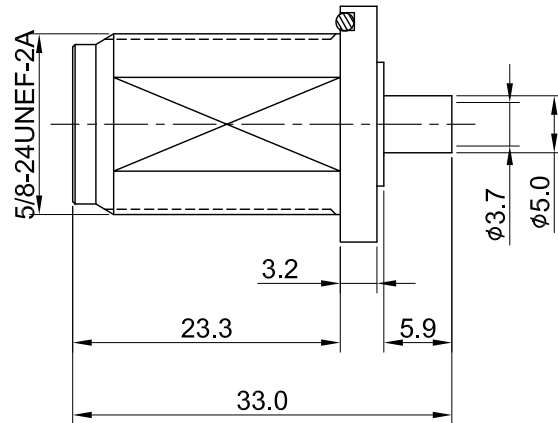
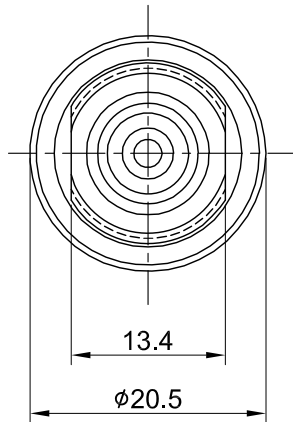
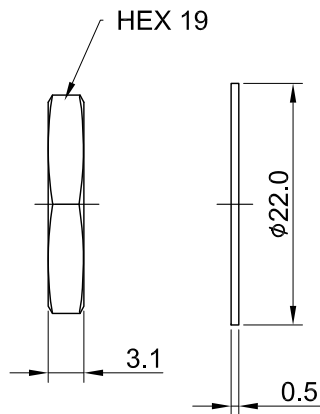
| REV | DESCRIPTION | DATE |
|------|---|------------|
| 1.01 | SHOW FULL MATERAIL NAME SILICONE RUBBER W. SILICONE | 2021/09/10 |
| 1.10 | CORRECT "L100" IN P/N W. 1740 | 2024/02/22 |



RECOMMENDED MOUNTING HOLE



RECOMMENDED STRIP LENGTHS



MECHANICAL DATA
 DURABILITY : 100 CYCLES
 TEMPERATURE RANGE : -65°C ~ + 165°C

ELECTRICAL DATA
 FREQUENCY RANGE: DC~6GHZ
 IMPEDANCE : 50Ω
 VSWR : 1.35 MAX.
 WORKING VOLTAGE : AC 1000V
 WITHSTANDING VOLTAGE : AC 2500V
 INSULATION RESISTANCE : 5000 MΩ MIN

| | | | | |
|----|-------------|-----------------|--------|------|
| 09 | CONTACT | BRASS | GOLD | 1 |
| 08 | SLEEVE | BRASS | NICKEL | 1 |
| 07 | INSULATOR B | TEFLON | NONE | 1 |
| 06 | NUT | BRASS | NICKEL | 1 |
| 05 | WASHER | BRASS | NICKEL | 1 |
| 04 | GASKET | SILICONE RUBBER | BLACK | 1 |
| 03 | PIN | P.BRONZE | GOLD | 1 |
| 02 | INSULATOR A | TEFLON | NONE | 1 |
| 01 | BODY | BRASS | NICKEL | 1 |
| NO | DESCRIPTION | MATERIAL | FINISH | Q'TY |

TITLE
 N st.bh.w.o/ring crimp type Jack for RG174/LMR100/CFD100

DWG NO.
 C28CE31L10002F-2

CUST.
 P/N: N/A
 DWG NO: N/A

SHEET 1 of 1 Unit: mm



| GENERAL TOLERANCES | | DRAWN BY: Kelly 2024/02/22 | |
|--------------------|------|----------------------------|-----------|
| .X | ±0.2 | | REV. 1.10 |
| .XX | ±0.2 | | |
| .XXX | ±0.2 | | |
| ANGLES | N/A | DA2402220003 | 1.10 |