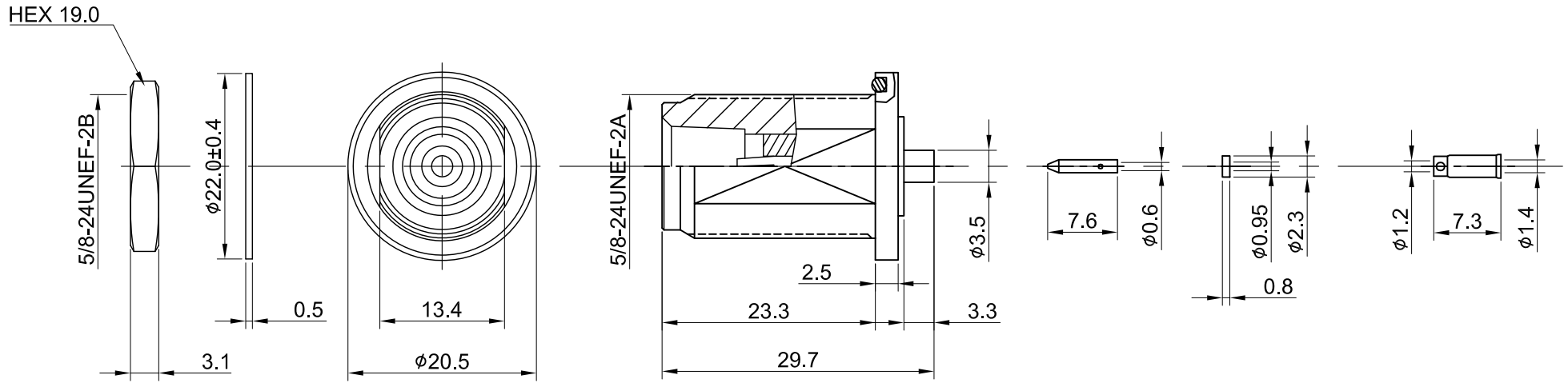
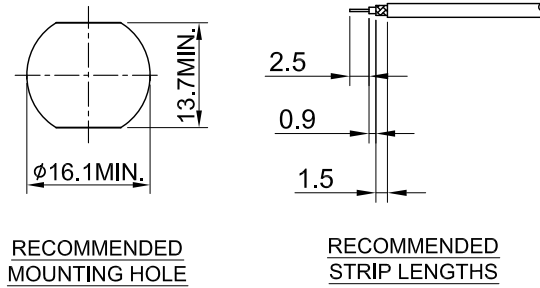


REV	DESCRIPTION	DATE
1.00	INITIAL DESIGN	2015/10/14
1.10	NEW DRAWING FRAME	2024/10/15



MECHANICAL DATA  
 DURABILITY : 100 CYCLES  
 TEMPERATURE RANGE : -65°C ~ + 165°C

ELECTRICAL DATA  
 FREQUENCY RANGE: DC~6GHZ  
 IMPEDANCE : 50Ω  
 VSWR : 1.35 MAX.  
 WORKING VOLTAGE : AC 1000V  
 WITHSTANDING VOLTAGE : AC 2500V  
 INSULATION RESISTANCE : 5000 MΩ MIN

09	NUT	BRASS	NICKEL	1
08	WASHER	BRASS	NICKEL	1
07	SLEEVE	BRASS	NICKEL	1
06	INSULATOR B	TEFLON	NONE	1
05	CONTACT	BRASS	GOLD	1
04	GASKET	SILICONE RUBBER	BLACK	1
03	CENTER PIN	P.BRONZE	GOLD	1
02	INSULATOR A	TEFLON	NONE	1
01	BODY	BRASS	NICKEL	1
NO	DESCRIPTION	MATERIAL	FINISH	Q'TY

TITLE		DRAWN BY: Kelly		2024/10/15
N(F) bh. w/Oring for 1.32, panel thick 2.5mm		CHK'D BY: Eileen		2024/10/15
DWG NO. C28CE31132002F-1		REV.		1.10
CUST. P/N: N/A		DA2410150002		
DWG NO: N/A		Unit: mm		
SHEET 1 of 1		GENERAL TOLERANCES		
		.X ±0.2		
		.XX ±0.2		
		.XXX ±0.2		
		ANGLES N/A		

