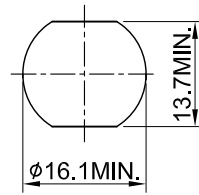
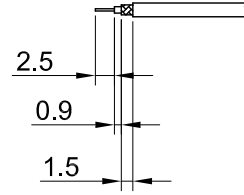


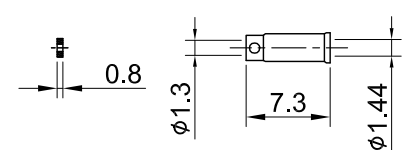
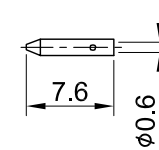
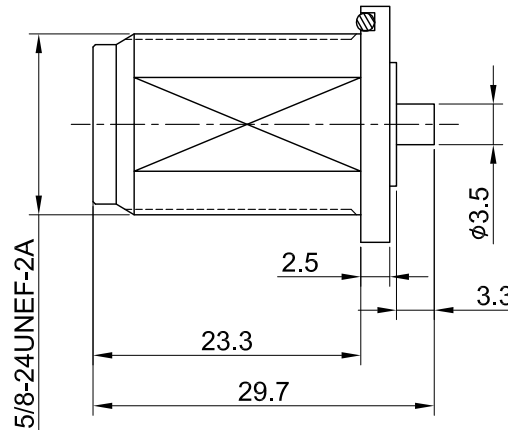
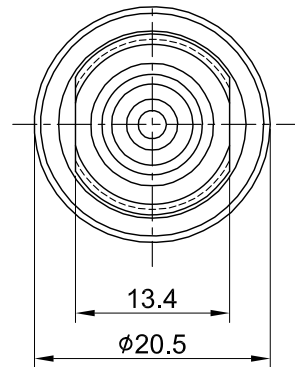
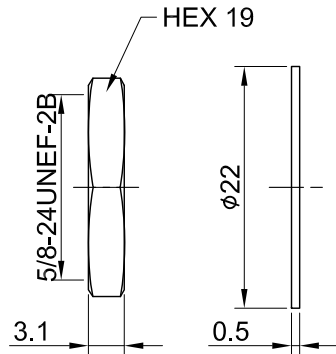
REV	DESCRIPTION	DATE
1.11	REMOVE TITLE SOLDER	2021/09/09
1.20	NEW DRAWING FRAME	2023/10/13
1.21	CORRECT THREAD SPECS	2023/10/27
1.22	CHG $\phi 1.44$ W. $\phi 1.44 \pm 0.02$	2024/04/23



RECOMMENDED MOUNTING HOLE



RECOMMENDED STRIP LENGTHS



MECHANICAL DATA
 DURABILITY : 100 CYCLES
 TEMPERATURE RANGE : -65°C ~ + 165°C

ELECTRICAL DATA
 FREQUENCY RANGE: DC~6GHz
 IMPEDANCE : 50Ω
 VSWR : 1.35 MAX.
 WORKING VOLTAGE : AC 1000V
 WITHSTANDING VOLTAGE : AC 2500V
 INSULATION RESISTANCE : 5000 MΩ MIN

09	GASKET	SILICONE RUBBER	BLACK	1
08	WASHER	BRASS	NICKEL	1
07	NUT	BRASS	NICKEL	1
06	SLEEVE	BRASS	NICKEL	1
05	INSULATOR B	TEFLON	NONE	1
04	CONTACT	BRASS	GOLD	1
03	INSULATOR A	TEFLON	NONE	1
02	CENTER PIN	P.Bronze	GOLD	1
01	BODY	BRASS	NICKEL	1
NO	DESCRIPTION	MATERIAL	FINISH	Q'TY

TITLE		DRAWN BY: Kelly		2024/04/23
N(F) bh. w/Oring for 1.37, panel thick 2.5mm		CHK'D BY: Eileen		2024/04/23
DWG NO. C28CE31137002F-1				REV.
CUST. P/N: N/A		GENERAL TOLERANCES .X ±0.2 .XX ±0.2 .XXX ±0.2 ANGLES N/A		DA2404230014 1.22
DWG NO: N/A				
SHEET 1 of 1	Unit: mm			