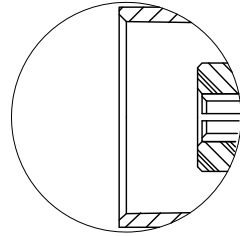
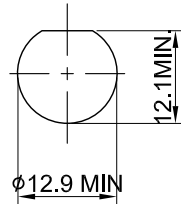


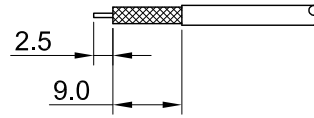
REV	DESCRIPTION	DATE
1.00	INITIAL DESIGN	2023/03/27
1.10	WASHER MATERIAL BRASS W. STEEL	2023/05/09
1.11	CORRECT INSULATION RESISTANCE	2024/01/29



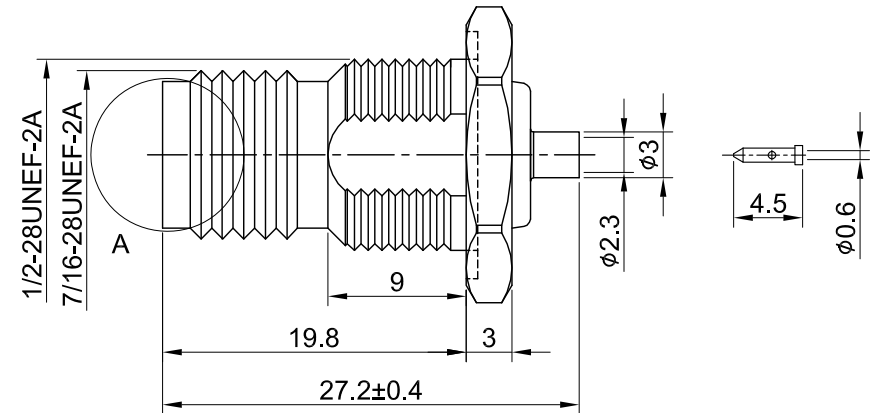
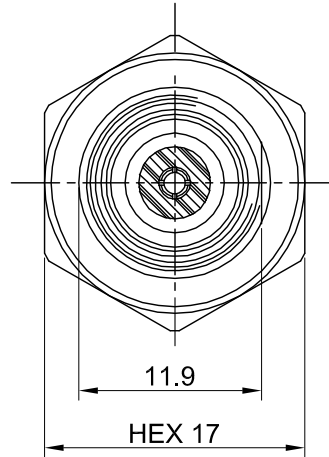
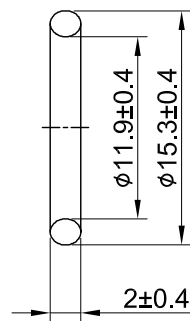
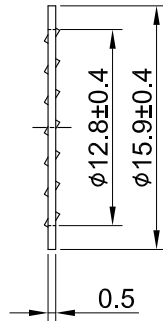
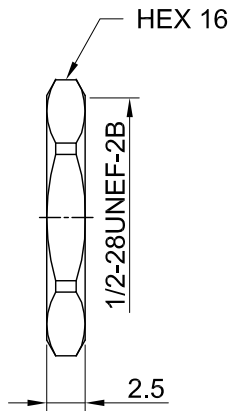
DETAIL A



RECOMMENDED MOUNTING HOLE



RECOMMENDED STRIP LENGTHS



MECHANICAL DATA
 DURABILITY : 100 CYCLES
 TEMPERATURE RANGE : -65°C ~ + 165°C

DIELECTRICAL DATA
 FREQUENCY RANGE: DC~6GHZ
 IMPEDANCE : 50Ω
 VSWR : 1.3 MAX.
 WORKING VOLTAGE : AC 500V
 WITHSTANDING VOLTAGE : AC 1500V
 INSULATION RESISTANCE : 5000 MΩ MIN

08	NUT	BRASS	NICKEL	1
07	WASHER	BRASS	NICKEL	1
06	O RING	SILICONE RUBBER	BLACK	1
05	BULLET CONTACT	BRASS	GOLD	1
04	CHASSIS	BRASS	GOLD	1
03	INSULATOR	TEFLON	NONE	1
02	CENTER PIN	PHOSPHOR BRONZE	GOLD	1
01	BODY	BRASS	NICKEL	1
NO	DESCRIPTION	MATERIAL	FINISH	Q'TY

TITLE		DRAWN BY:	
TNC(F) bh. wOring solder type for RG405/0.085 semi cable		Lottie	2024/01/29
DWG NO. C18CD3F085003F-1		CHK'D BY:	Kana 2024/01/29
CUST. P/N: N/A		REV. 1.11	
DWG NO: N/A		DA2401050003	
SHEET 1 of 1		Unit: mm	



GENERAL TOLERANCES	
.X	±0.2
.XX	±0.2
.XXX	±0.2
ANGLES	N/A