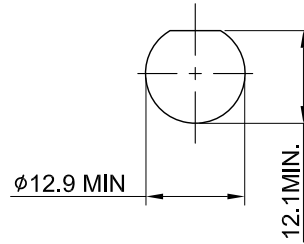
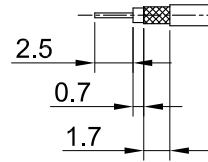


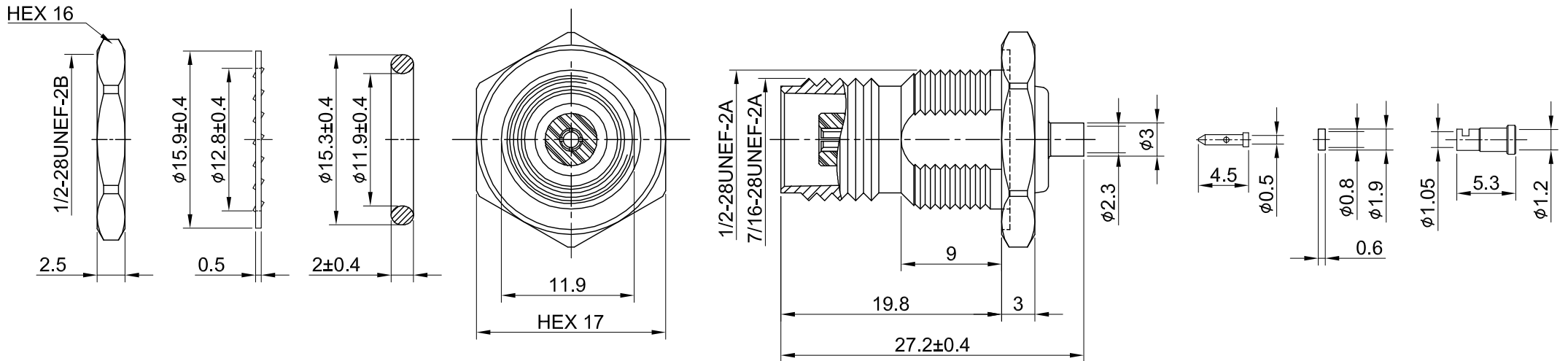
REV	DESCRIPTION	DATE
1.02	CORRECT WASHER MATERIAL NAME STEEL W. BRASS	2023/01/11
1.10	NEW DRAWING FRAME	2023/12/19
1.20	CHG WASHER BRASS W. STEEL	2024/04/15



RECOMMENDED MOUNTING HOLE



RECOMMENDED STRIP LENGTHS



MECHANICAL DATA
 DURABILITY : 100 CYCLES
 TEMPERATURE RANGE : -65°C ~ + 165°C

ELECTRICAL DATA
 FREQUENCY RANGE: DC~6GHz
 IMPEDANCE : 50Ω
 VSWR : 1.5 MAX.
 WORKING VOLTAGE : AC 500V
 WITHSTANDING VOLTAGE : AC 1500V
 INSULATION RESISTANCE : 5000 MΩ MIN

10	NUT	BRASS	NICKEL	1
09	WASHER	BRASS	NICKEL	1
08	O RING	SILICONE RUBBER	BLACK	1
07	FERRULE	BRASS	GOLD	1
06	GASKET	TEFLON	NONE	1
05	BULLET CONTACT	BRASS	GOLD	1
04	CHASSIS	BRASS	NICKEL	1
03	CENTER PIN	P.BRONZE	GOLD	1
02	INSULATOR	TEFLON	NONE	1
01	BODY	BRASS	NICKEL	1
NO	DESCRIPTION	MATERIAL	FINISH	Q'TY

TITLE		DRAWN BY: Kelly		2024/04/15
TNC(F)st.bh. wOring, crimp for 1.13/1.13LL		CHK'D BY: Eileen		2024/04/15
DWG NO. C18CD3F113003H		REV.		1.20
CUST. P/N: N/A		DA2404150010		
DWG NO: N/A				
SHEET 1 of 1		Unit: mm		
GENERAL TOLERANCES		ANGLES N/A		
.X	±0.2			
.XX	±0.2			
.XXX	±0.2			

