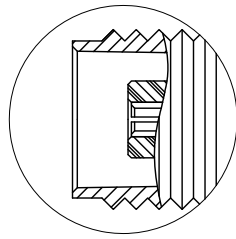
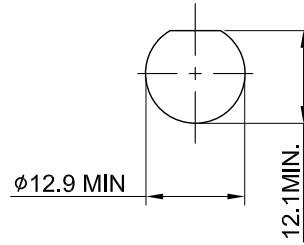


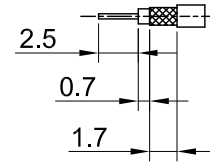
REV	DESCRIPTION	DATE
1.21	CORRECT WASHER STEEL W. BRASS	2023/01/11
1.30	NEW DRAWING FRAME	2023/12/21
1.40	CHG WASHER BRASS W. STEEL	2024/05/14



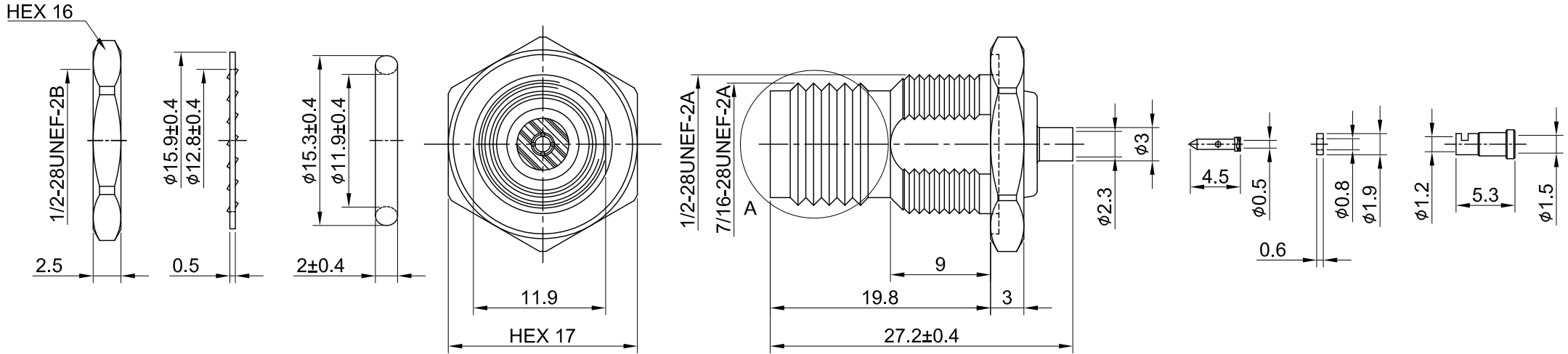
DETAIL A



RECOMMENDED MOUNTING HOLE



RECOMMENDED STRIP LENGTHS



MECHANICAL DATA
 DURABILITY : 100 CYCLES
 TEMPERATURE RANGE : -65°C ~ + 165°C

ELECTRICAL DATA
 FREQUENCY RANGE: DC~6GHZ
 IMPEDANCE : 50Ω
 VSWR : 1.5 MAX.
 WORKING VOLTAGE : AC 500V
 WITHSTANDING VOLTAGE : AC 1000V
 INSULATION RESISTANCE : 5000 MΩ MIN


10	NUT	BRASS	NICKEL	1
09	LOCK WASHER	BRASS	NICKEL	1
08	O RING	SILICONE RUBBER	BLACK	1
07	FERRULE	BRASS	GOLD	1
06	INSULATOR GASKET	TEFLON	NONE	1
05	CHASSIS	BRASS	NICKEL	1
04	BULLET CONTACT	BRASS	GOLD	1
03	CENTER PIN	P.BRONZE	GOLD	1
02	INSULATOR	TEFLON	NONE	1
01	BODY	BRASS	NICKEL	1
NO	DESCRIPTION	MATERIAL	FINISH	Q'TY

TITLE
 TNC(F)st.bh. wOring, crimp for 1.32/1.32DS

DWG NO.
 C18CD3F132003H

CUST. P/N: N/A
 DWG NO: N/A

SHEET 1 of 1 Unit: mm



GENERAL TOLERANCES
 .X ±0.2
 .XX ±0.2
 .XXX ±0.2
 ANGLES N/A

DRAWN BY: Kelly 2024/05/14
 CHK'D BY: Eileen 2024/05/14

REV. 1.40
 DA2405140022