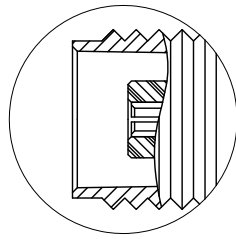
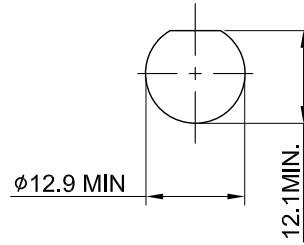


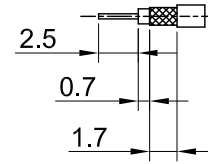
REV	DESCRIPTION	DATE
1.00	INITIAL DESIGN	2024/03/22
1.10	CORRECT WASHER STEEL W. BRASS	2024/04/15



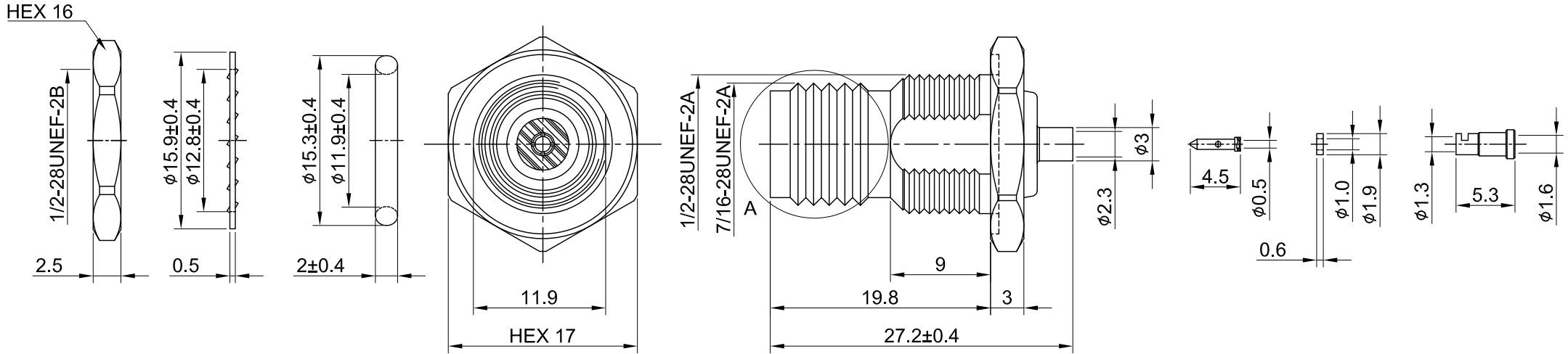
DETAIL A



RECOMMENDED MOUNTING HOLE



RECOMMENDED STRIP LENGTHS



MECHANICAL DATA  
 DURABILITY : 100 CYCLES  
 TEMPERATURE RANGE : -65°C ~ + 165°C

ELECTRICAL DATA  
 FREQUENCY RANGE: DC~6GHZ  
 IMPEDANCE : 50Ω  
 VSWR : 1.5 MAX.  
 WORKING VOLTAGE : AC 500V  
 WITHSTANDING VOLTAGE : AC 1000V  
 INSULATION RESISTANCE : 5000 MΩ MIN

10	NUT	BRASS	NICKEL	1
09	WASHER	BRASS	NICKEL	1
08	O RING	SILICONE RUBBER	BLACK	1
07	FERRULE	BRASS	GOLD	1
06	INSULATOR GASKET	TEFLON	NONE	1
05	CHASSIS	BRASS	NICKEL	1
04	BULLET CONTACT	BRASS	GOLD	1
03	CENTER PIN	P.BRONZE	GOLD	1
02	INSULATOR	TEFLON	NONE	1
01	BODY	BRASS	NICKEL	1
NO	DESCRIPTION	MATERIAL	FINISH	Q'TY

TITLE		DRAWN BY: Kelly		2024/04/15
TNC(F)st.bh. wOring, crimp for 1.37		CHK'D BY: Eileen		2024/04/15
DWG NO. C18CD3F137003H		REV.		1.10
CUST. P/N: N/A DWG NO: N/A		DA2404150012		
SHEET 1 of 1		Unit: mm		

GENERAL TOLERANCES  
 .X ±0.2  
 .XX ±0.2  
 .XXX ±0.2  
 ANGLES N/A