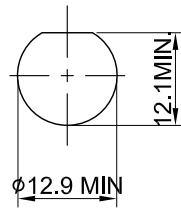
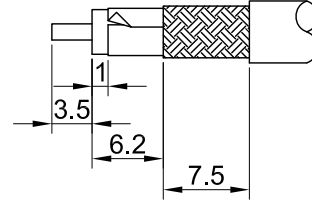


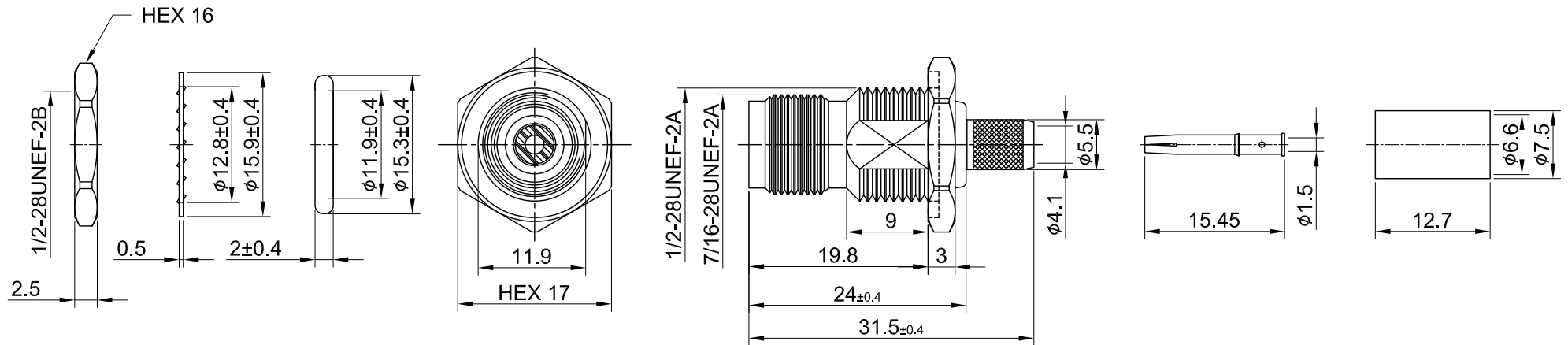
REV	DESCRIPTION	DATE
1.20	CHG WASHER BRASS w. STEEL	2023/06/01
1.21	CORRECT INSULATION RESISTANCE	2024/01/30



RECOMMENDED MOUNTING HOLE



RECOMMENDED STRIP LENGTHS



MECHANICAL DATA  
 DURABILITY : 100 CYCLES  
 TEMPERATURE RANGE : -65°C ~ + 165°C

DIELECTRICAL DATA  
 FREQUENCY RANGE: DC~6GHZ  
 IMPEDANCE : 50Ω  
 VSWR : 1.5 MAX.  
 WORKING VOLTAGE : AC 500V  
 WITHSTANDING VOLTAGE : AC 1500V  
 INSULATION RESISTANCE : 5000 MΩ MIN

08	NUT	BRASS	NICKEL	1	TITLE TNC(F) bh. wOring, crimp type for LMR240			
07	WASHER	BRASS	NICKEL	1				
06	O RING	SILICONE RUBBER	BLACK	1				
05	FERRULE	BRASS	NICKEL	1	DWG NO. C18CD3FL24003D			
04	PIN	P.BRONZE	GOLD	1	CUST. P/N: N/A DWG NO: N/A			
03	CHASSIS	BRASS	NICEKL	1	SHEET 1 of 1 Unit: mm		GENERAL TOLERANCES	DRAWN BY: Lottie 2024/01/30
02	INSULATOR	TEFLON	NONE	1			.X ±0.2 .XX ±0.2 .XXX ±0.2 ANGLES N/A	CHK'D BY: Kana 2024/01/30
01	BODY	BRASS	NICKEL	1				REV.
NO	DESCRIPTION	MATERIAL	FINISH	Q'TY			DA2401050012	1.21