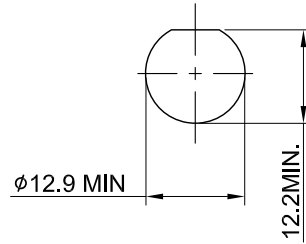
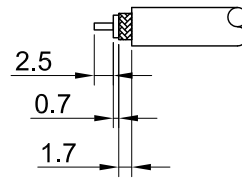


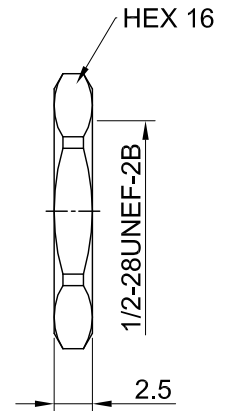
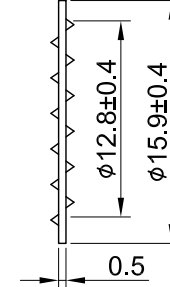
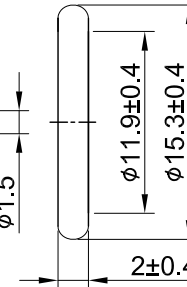
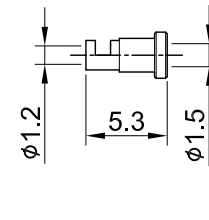
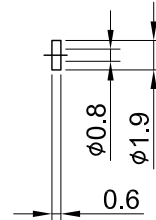
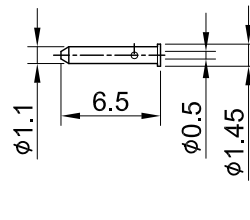
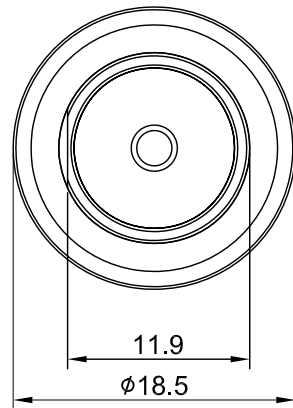
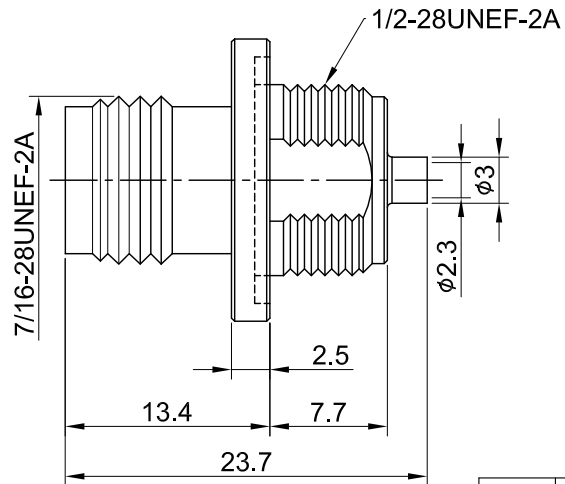
REV	DESCRIPTION	DATE
2.00	CHG FERRULE DESIGN, CHG 1.7/φ1.5 W. 2.6/φ1.4, ADD D-FLAT 11.9	2021/08/11
2.10	CORRECT WASHER STEEL W. STAINLESS STEEL	2024/04/15
2.20	CHG WASHER BRASS W. STEEL	2024/04/15



RECOMMENDED MOUNTING HOLE



RECOMMENDED STRIP LENGTHS



MECHANICAL DATA  
 DURABILITY : 100 CYCLES  
 TEMPERATURE RANGE : -65°C ~ + 165°C

ELECTRICAL DATA  
 FREQUENCY RANGE: DC~6GHz  
 IMPEDANCE : 50Ω  
 VSWR : 1.5 MAX.  
 WORKING VOLTAGE : AC 500V  
 WITHSTANDING VOLTAGE : AC 1500V  
 INSULATION RESISTANCE : 5000 MΩ MIN

12	NUT	BRASS	NICKEL	1
11	WASHER	BRASS	NICKEL	1
10	O RING	SILICONE RUBBER	BLACK	1
09	FERRULE	BRASS	GOLD	1
08	INSULATOR C	TEFLON	NONE	1
07	BULLET CONTACT	BRASS	GOLD	1
06	BODY	BRASS	NICKEL	1
05	INSULATOR B	TEFLON	NONE	1
04	CENTER CONTACT	Be.Cu	GOLD	1
03	CENTER PIN	P.BRONZE	GOLD	1
02	PRESS WASHER	BRASS	NICKEL	1
01	INSULATOR A	TEFLON	NONE	1
NO	DESCRIPTION	MATERIAL	FINISH	Q'TY

TITLE  
 TNC(F) st. bh.(1/2"-28UNEF) w.Oring, front mount type for 1.32 cable

DWG NO.  
 C18CU3F132023

CUST.  
 P/N: N/A  
 DWG NO: N/A

SHEET 1 of 1 Unit: mm



GENERAL TOLERANCES	DRAWN BY: Kelly	2024/04/15
.X ±0.2	CHK'D BY: Maria	2024/04/15
.XX ±0.2		
.XXX ±0.2		
ANGLES N/A		
DA2404080003	REV.	2.20